

Fun Along the Road:

A Guide Book to Highway 18




Travel around three different villages and explore the Alishan National Scenic Area!

The adventure begins!

Every place is unique and special in its own way.

The sites along Provincial Highway 18 are beautiful, be it the tea plantations, the cherry blossom trees, or the wild creatures.






While driving towards the mountains,
every little thing we see becomes
precious memories.

The car moves quietly along the
highway, like a tiny ladybug flitting in
and out of the tea plantations.

As we move onward, the pleasant
aroma of tea leaves wafts through the
air as we are greeted by the hospitality
of local villagers.

They tell us stories about the three villages, as we make our way from the foot of the mountain to its top.





In the early morning, we sit on the roof of the car while sipping a cup of Alishan coffee.

We take in the view of the sea of clouds lying beneath our feet.

The stunning view and the energizing coffee help us start the day.

We continue to drive, but quietly, so as to not disturb the creatures in the forest.

Listen to the sounds of their cries! It is as if they are singing together.

We get out of the car and breathe in the scent of nature all around us.

Our surroundings help us relax and we experience a peacefulness that we have never felt before.



We see cherry blossom petals dancing
through the air.

I pocket the petals, intending to pickle
them.

Next year, I will add the pickled petals
to my homemade rice balls.

Wouldn't it be nice to have a taste of
cherry blossom trees in your rice ball?



As spring slides into summer, we see
hundreds of thousands of fireflies.

At night, the wind slides through the
bamboo trees, singing a beautiful mel-
ody.

It wouldn't be a summer night along
Highway 18 without the delicious smell
of a grilled bamboo dish.

In autumn, we go hiking.

Ancient trees and mosses cover the entire forest. Occasionally, sounds echoed throughout the forest.

It is like music to our ears, and we cherish those moments deeply.



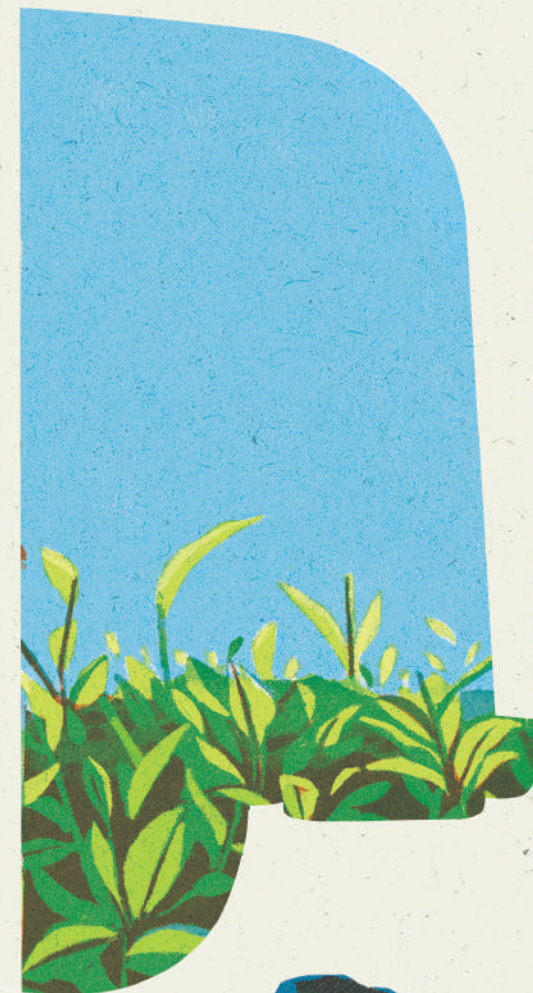
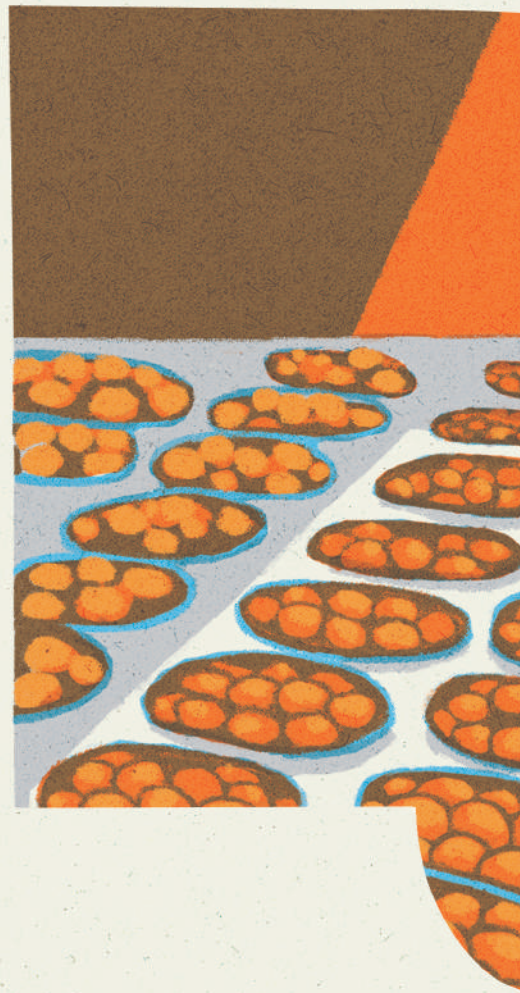
After strolling through the woods, we grow tired.

The pleasant smell of tea and coffee along the way reminds us it is time we take a break.

We drink tea while sampling some of the local cuisine.

We chat with the locals and it is interesting to learn about the culture!





Seasons change and with it,
the color of our surroundings.

The pink cherry blossoms of
spring, the white bamboo
shoots of summer, the orange
persimmons of autumn, and
the green tea leaves of winter.

We will never forget the deli-
cious food we ate along High-
way 18.



The adventure is amazing, like the sweet aftertaste of tea.

We will soon plan another adventure and find other ways to have fun along Highway 18.

Let's go on an Adventure!

Now let's take you on a journey to visit places you've never been to before. I hope you'll enjoy the ride.

- Follow the Map
- The Villages Along the Way
- The Weather is Great Here!
- Local Specialties
- Buy These for Yourself
- Must-buy Products
- The Hiking Trails
- The Spirits of the Forest
- Seasonal Specialties
- 1-day Itineraries
- 2-day Itineraries
- Recommended Stores
- How do I Get to Alishan?

Chiayi Road 124

- 1 Good Fortune and Persimmons

Highway 18

- 2 Full of Beans
- 3 Agriculture Co-op Society
- 4 XiaoGanZhe Sugarcane Juice

Chiayi Road 131

- 5 Longmei Handmade Buns
- 6 Songshan Tea Factory

Chiayi Road 129

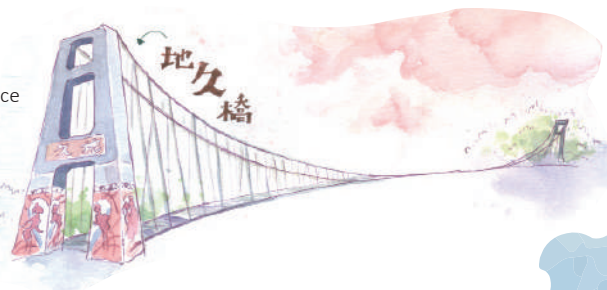
- 7 Jinguang Tea Factory
- 8 Lo's Family Farm
- 9 Yama Guesthouse

Highway 18

- 10 Traditional Cuisine
- 11 Laozhengyi Tea Factory
- 12 Xianjin Coffee Shop
- 13 Qianlong Farm
- 14 Jiahe Tea Factory
- 15 Arong's Store
- 16 Xulong Tea Factory
- 17 Ruifeng Tea Factory
- 18 Chunxin Tea Factory
- 19 Happy Self-Service Grocery Store
- 20 Simple Happiness Hot pot
- 21 Ahong's Home
- 22 Mingda Tea Factory
- 23 Jinglong Tea Factory
- 24 Yanshanyu Tea House
- 25 Shengli Farm
- 26 Longyinshan Garden

Chiayi Road 130

- 27 Free Spirit Coffee farm
- 28 Xiantian Temple
- 29 Gongtian 32 Visitor Center
- 30 House of Sturgeon



*Chiayi Road = Chiayi Township Road

Mountain Village – Chukou

Chukou village is the first stop on Highway 18 as you head towards Alishan. As you follow Highway 18 and enter Chukou, you will come across the Zhulu tribal village. There you will experience the hospitality and vitality of the local villagers and sample their local pork meat and grilled sausages. Longyin Temple was also the filming location for the popular Taiwanese drama Ji Gong. September is the season for the persimmons. Travelers who visit Puwei during the months of September and October will see vibrant orange landscapes along Chiayi Road 124-1. The trees will be ripe with persimmons and tourists will be able to participate in persimmon picking activities.

Tufei Village - Gongxing

Upon leaving Chukou, you will then enter the Gongxing area. From there, the mountain roads curve one after another. As you head towards the mist-shrouded mountains, in an instant, you'll feel as if you've been transported into the middle of a dream-like forest. Roll down your windows to hear the cries of the insects. After driving for a while through the mist, you'll come upon Tufei village. There the villagers gather at their Tufei Market, where they sell local products and handmade crafts. If you are interested in becoming one-day villagers, then sign up at the Gongxing community center to take part in this experience. The old villagers will then teach you the secret of how to move freely about the mountain. Once the sun sets and the stars rise from behind the mountains, that is when Gongxing's firefly party is ready to begin. Specks of small lights shine amidst the darkness of the forest. Throughout the different seasons, you can see different species of fireflies, so why don't you stay the night!

Tea Village – Gongtian

Before the sun rises, wake up and head towards Xiding. Walk along a short path towards a secret area and wait patiently for the first rays of light to pierce the sky. The mountains will shine golden in the light, surrounded by a sea of clouds and tea gardens.

The Gongtian area is known for producing tea. As you stand on top of the mountain, you'll see an expanse of tea fields stretching out far and wide down below. During tea-picking season, the light fragrance from the tea leaves fills the air. Hospitable locals are always willing to invite travellers in for a cup of tea and a long chat. Another little known fact is that over the holidays, every family in the village will display a pot of orchids in their home. There's even a field of orchids located right in Gongtian! The favourable climate of Sid-ing means that there's a large number of orchid greenhouses in the area. The next time you go to Alishan, take the time to truly experience the charm of these three villages.

No need for air conditioning!

May ~ Oct.

Average temp.

16-20°C

Nov. ~ Apr.

Average temp.

10-15°C

The best time to grow tea!!

May ~ Oct.

Rainy
season

Time for sunrise!

Apr. - Oct.

Average sunrise time

5 AM

Nov. - Mar.

Average sunrise time

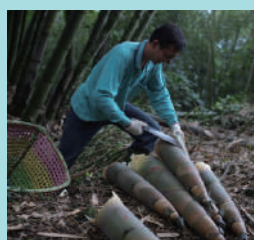
6 AM

Nov. - Jan.

Look!
A sea of
clouds!

Seize your
opportunity!

Are you lucky
enough?



Tea

Alishan is constantly surrounded by clouds and mist due to its high altitude, making it the perfect environment to grow tea in. Oolong, jinsyuan, honey black tea, and red oolong are the most common varieties of tea grown here. While tea can be harvested year round, the highest quality tea leaves are produced during spring and winter. If you visit Alishan during the harvest season, you might see farmers picking tea in the mountains!

Orchids

The weather here in Siding is great for growing orchids, not only allowing them to grow faster, but also enabling them to bloom for longer periods of time. Orchids here are mostly cultivated in greenhouse environments and Siding currently boasts the country's largest orchid plantation. The mostly commonly grown variety is the moth orchid. If visitors are interested, they can make reservations to go see the orchid themselves.

Coffee

Coffee beans grown in the Alishan region have received numerous awards in recent years. The coffee is processed by a variable number of methods, including dry, wet, and honey processing. There are a number of unique coffee shops located along Highway 18. If travelers grow weary on their journey, then why not stop and have a coffee while enjoying the magnificent view!

Bamboo

Bamboo is an integral part of the lives of those who live in the mountain. From the material used to building their toolsheds, to the decorations placed in their homes, bamboo can be found everywhere - it's even an important part of their diet. Different varieties of bamboo grow year round in Alishan, but the square bamboo grown in March and April is a local specialty. If eating bamboo sounds appetizing, then be sure to make a reservation at one of our restaurants to enjoy a very special bamboo meal!

Persimmons

At the beginning of September, the persimmon trees will begin to turn yellow, signaling the arrival of persimmon season. Once October rolls around, farmers will be busy picking ripened persimmons from their trees. Did you know that 40% of Taiwan's persimmons are produced in the Puwei region? Come here if you want to enjoy some delicious persimmons!

Ginger

Have you seen ginger that is still in the soil? You probably didn't know that Alishan also produces ginger, but here the farmers grow ginger that's bigger than your face! Like they say, when it comes to ginger the spicier the better and the ginger grown in Alishan is truly quite spicy. Throw them into soups or stir-fry them, they'll be sure to add a kick to your cooking/homemade snacks, and provide you with a ton of energy.

Sturgeon

There is a restaurant deep in the mountains that specializes in preparing sturgeon. Sturgeon can only thrive in clean water, at a temperature between 15°C to 20°C. This in turn means that their meat is both deliciously sweet and firm. Not only can you eat sturgeon here, but be sure to not miss out on their other local dishes as well!

Alishan is known for its agriculturally farmed and processed products. Low-altitude areas mainly grow persimmons, as well as other fruits such as peaches, plums, longan, and mandarins. In an effort to develop efficient agribusiness, they have also begun producing dried fruit and fruit teas. High-altitude areas are known for growing tea. Recently, organic farming and tea products are becoming more popular, leading

to tea infused cuisine, tea buns and tea biscuits. Some tea houses are even providing farm tours and tea roasting workshops. Besides tea, coffee and orchids are also becoming popular products as well. Thanks to the high-altitude and ideal weather, Alishan coffee is becoming known for its rich aroma and full body of flavor.



Bamboo Cuisine

Alishan is known for growing bamboo shoots that can be made into tasty dishes. Come enjoy various bamboo dishes all year round! (Various restaurants)

Sturgeon Feast

There sturgeon fish here are raised in clean mountain water, ensuring that their meat is fresh and firm! Just one sturgeon can be turned into a full table of dishes for you, so come and enjoy a delicious meal! (House of Sturgeon)

Three-colored Rice Cake

Three-colored rice cake is made from rice and other natural ingredients and is one of the hidden delicacies of the Alishan area. (Shengli Farm, Lo's Family Farm)

Indigenous Cuisine

Wild boar grilled to perfection is a treat you won't want to miss out on. You'll want to try it even if you're not hungry! (Zhulu Village, Yupasu Tsou Restaurant)

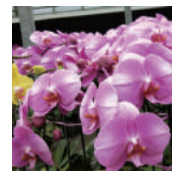
Papaya Rice Cake

That's right, papaya-flavored rice cake! This is another hidden delicacy of Alishan! (Lo's Family Farm)

Tea Feast

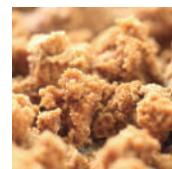
Tea leaf-infused dishes is some of the best food you can try here in Alishan. Come enjoy the black tea rice, tea chicken soup, and many, many, more. (Shengli Farm)

Jinsyuan tea/Oolong tea/Black tea/Tea balls/Tea biscuits/Tea-flavored pumpkin seeds/Tea buns/Hinoki essential oil/ Wild honey/ Dried ginger slices/Wild Aiyu



Orchids

Come to the farms to buy the orchids directly from the farmers! Over half of Taiwan's orchids are grown in the Siding, where the country's largest orchid greenhouse. Flower lovers shouldn't miss the opportunity! (Xianjin Coffee Shop)



Handmade Black Sugar

These handmade black sugars are made by sugar canes grown in the Alishan region, and boiled down to sugar by the producers for three to four hours. (Jiahe Tea Factory)



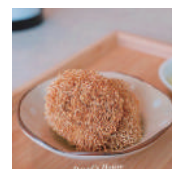
Tea-flavored Pumpkin Seeds

Pumpkin seeds cooked together with roasted oolong leaves and salt become a delectable treat for everyone to enjoy. (Mingda Tea Factory)



Traditional Tea Balls

These tea balls are one of the signature products here in the Alishan region. They require hours of care and preparation by the most skillful tea makers. If you mature them for several years, then they'll taste even better! (Xulong Tea Factory)



Wild Aiyu Seeds

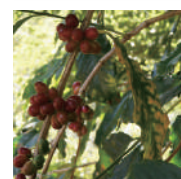
Aiyu seeds will produce a jelly-like substance after being rubbed in water. The jelly they produce tastes great with a few slices of lemon and some sweet syrup during the summer days. (Various farms)

Handmade black sugar/Mountain vegetables/Wasabi products/Orchids/Bamboo shoot products/Persimmons/Dried fruit/ Coffee/Camelia oil



Persimmons

The persimmons here are sweet, crunchy, and packed with vitamins. They can also be made into delicious treats such as dried permissions, permission ice cream, and permission tea. (Fanlu Farm, Agricultural Product Center)



Alishan Coffee

Alishan coffee is known for its complex aroma, full rich body, and delicate aftertaste. (Jiahe Tea Factory, Arong's Store, Ahong's Home, and Free Spirit Coffee Farm)



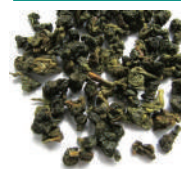
Pickled Bamboo Shoots

Pickled bamboo shoots are handmade entirely by local residents and are a mixture of sweet, sour, and saltiness. Come have a taste of this traditional flavor! (Available at Lo's Family Farm)



Black Tea Biscuits

Ground-up tea powder is added to biscuit dough, creating biscuits that are filled with the aroma of tea. Be sure to make a reservation to taste these freshly baked biscuits! (Jinkuang Tea House)



Alishan Tea

Alishan is one of the most well known tea regions in Taiwan and grows varieties such as jinsyuan and oolong. (Available at various tea houses)

In the early days, people who lived in the Alishan area would often need to hike across the mountain in order to transport goods to various transfer stations. As a result, many of these natural mountain paths have been kept in a preserved state. Nowadays, there are far more sights and sounds to appreciate: the cry of the insects, the beauty of the

landscapes, the sunrises and sunsets, and the beautiful sea of clouds. Take your time and walk along these mountain paths and feel the flow of the mountain. Some trails are found in the bamboo forests and some are found by tea plantations.

Highway 18 – 12 Nearby Trails

Area	Trail	Elevation	Distance	Road	Attractions
Longmei	Longmei Trail	900M	874M	Provincial Highway 18	Tung Tree/Camphor Tree /Common Fig Tree
	Mazhu Lake Trail		2000M	Chiayi Township Road 131	Tea Plantation / Sunrise /Sunset
Siding	Eryanping Trail	1000M	1000M	Provincial Highway 18	Bamboo Forest/Rock Formation/Tea Plantation/Suspension Bridge/Lake Viewing/ Sea of Clouds
	Zhixing Trail	1100M	200M	Provincial Highway 18	
Longtou	Longding Trail	1300M	700M	Provincial Highway 18	Zengwen River/Bazhang Canyon/Sunrise/Elephant Mountain/Longtou Mountain/ Chaozhouhu Mountain/Gongtian Mountain/Sanyanping Mountain/Anding Mountain/Viewing
Shizhuo	Shizhuo Trail	1360M - 1690M	5000M	Provincial Highway 18	Misty Road/Tea Road/Cloudy Road/Sky Road/Blossom Road
Dinghu	Dinghu Trail	1680M - 1750M	1800M	Provincial Highway 18	Mengzong Bamboo Forest/ Ancient Forest/Fossils
Fencihu	Fencihu Trail	1440M-1550M	4000M	Chiayi Township Road 169	Alishan Old Railroad/Old Street/Cultural History Museum/Xiaonan Forest/Wooden Horse Road/Fireflies
Guanghua	Firefly Trail	1150M	2000M	Chiayi Township Road 159	Fireflies/Ruins of historical paper-making
	Flying Squirrel Trail	1100M-1350M	2000M	Chiayi Township Road 159	Flying Squirrels/Fireflies/ Bioluminescent Fungus
Bantian-yan	Xiuhui Trail	350M	1300M	Chiayi Township Road 159	Rest Stop
	Qifu Trail	350M-650M	1880M	Chiayi Township Road 159	Phoebe Zhennans/Bishop Wood/Crepe Myrtle/Poison Peach/Formosan Gum/Chinese Fir/Formosan Acacia

Alishan Mahonia

A small, green shrub with feather-shaped, compound leaves. Likes to grow at the forest edge or in dry areas. Can be used in medicine.

Square Bamboo

Grows at elevations between 1200 – 1800M. Its thick skin protects it from pests.

Crepe Myrtle

Large deciduous tree. Most prominent feature is its glossy bark. In the spring, it is covered by white blossoms.

Plants

White-eared Sibia

The head is black and its most prominent feature is the large, white stripe through the eye. Its chest is light chestnut brown.

Besra Sparrowhawk

Body length is between 25 to 36cm. Spends most of its time relaxing and rarely flies to high elevations.

Crested Goshawk

Body length is between 40 to 48cm. Spend most of its time resting in the trees. Likes to fly in warm, calm weather.

Steere's Liocichla

Body length is around 17cm. Its entire body is yellow-green. Lives in trees and grasslands up in the mountains. Likes to sing and rarely flies.

Ring-necked Pheasant

Its eyes are surrounded by a prominent splash of red. It has colorful feathers and lives in low-lying and arid grasslands.

Taiwan Blue Pheasant

Is identified by the bright, splash of red on its face as well as its deep-blue plume. It resides in the lower levels of a broadleaf forest.

Long-haired Serow

Also known as the Taiwan Serow. Its body is a dark-brown color. Usually travels alone and is often seen at middle to high elevations up in the mountains.

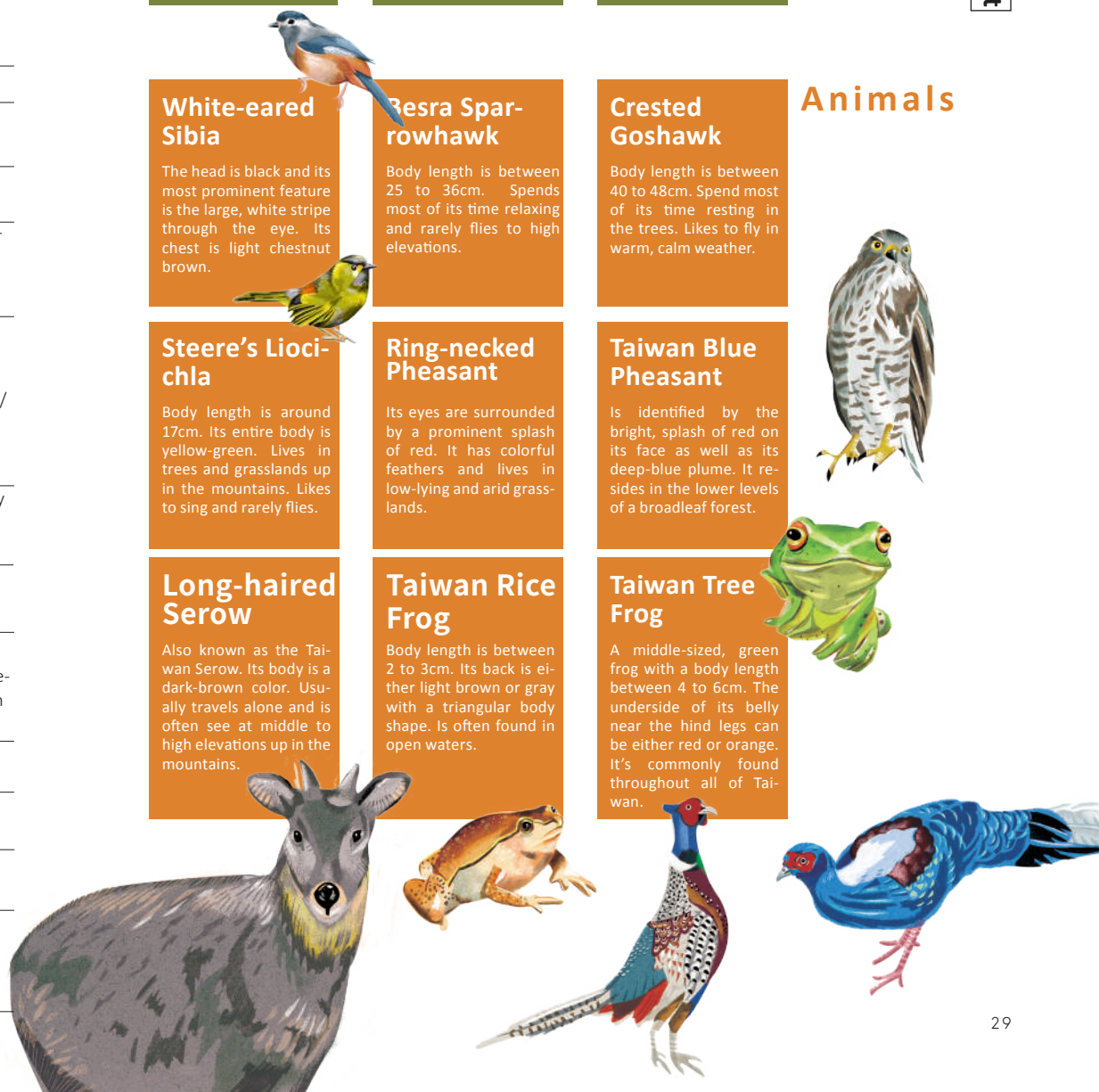
Taiwan Rice Frog

Body length is between 2 to 3cm. Its back is either light brown or gray with a triangular body shape. Is often found in open waters.

Taiwan Tree Frog

A middle-sized, green frog with a body length between 4 to 6cm. The underside of its belly near the hind legs can be either red or orange. It's commonly found throughout all of Taiwan.

Animals





Feb | Mayasvi

Mayasvi is a sacred ritual that the Tso (Indigenous group in Taiwan) hold to pay respect to their gods. In the past, the ritual was meant to pray for victory and strength during war.

Mar | Cherry Blossom Season

Every spring, cherry blossoms make for a spectacular view on Alishan. During the peak season, countless visitors will gather on the mountain to take in this glorious view. Taiwan's cherry blossoms start to bloom from December to March on Alishan. The Cherry Blossom Festival in the Alishan Scenic Area starts in March and ends in April. During the season, weeping cherry trees and peony cherry trees are everywhere.



Jul/Aug | Homeyaya

Millet is the major agricultural crop and the most important source of food for the Tsou people. Homeyaya, is their annual ritual held in July and August, to celebrate a good harvest. The ritual pays tribute to the goddess of millet, thanking her for looking over the crops. The tradition also helps strengthen the familial bonds of the villagers.

1

Jan | Sunrise Impression Concert

Alishan is the country's most popular tourist destination when it comes to viewing the sunrise. Ever year, the Sunrise Impression Concert is held, so that travelers from around the country can enjoy the sounds of beautiful music while welcoming the first rays of the new year. During the concert, listeners can enjoy a beautiful symphony of music coupled with a melodious harmony from the singers. As the sun rises from behind the mountain, the sound of music pierces through the fresh mountain air and sea of clouds. At Alishan, you can experience a New Years unlike anywhere else. There, one can enjoy the first golden rays of sunlight from Taiwan's most beautiful sunrise while listening to wonderful music that can calm the soul.

2

3

4

Apr/May | Firefly Season

Every year at the beginning of summer, tens of thousands of fireflies gather in the mountains, making it the best time to go firefly watching. The Xia district alone holds over 42 different species of fireflies, accounting for two thirds of Taiwan's firefly population. Throughout all four seasons, different species of fireflies can be seen from between low to mid level elevations, ranging from the common "black-winged firefly" to rarer species. The Gongxing community have currently rolled out their own firefly event, where participants can take pictures together with the fireflies at Tufei ecological Park. (Photography:Chen Shan-hung)

5

6

7

8

Oct | Fanlu Persimmon Festival

Every year, Fanlu Township produces around 3,200 tons of persimmons, which accounts for 70 to 80% of total persimmon production in Taiwan. The different varieties of persimmons that are grown are the best in quality; fragrant, sweet, crispy, and full of vitamins. Other products, such as persimmon tea, cosmetics, cakes, and creams have also become popular as well. In an effort to spur the growth of Fanlu's agricultural industries, the farmers tried to combine agriculture and culture with tourism. Thus, leading to the creation of the annual "Persimmon Festival", which runs every year from September to November.

9

10



Chukou

• Visitor Center

Alishan Scenic Area Tour

• Zhulu Village - Workshop, Archery, Paradise of Deer

• Niupuzai Grasslands



Longmei

• Gongxian Ecological Park (Only open on holidays)

• Songshan Tea Factory Guided Tour

• Longmei Handmade Buns

• Mazhu Lake Trail



Anding

• Eryanping Trail

Hiking Trail, Sea of Clouds

• Traditional Cuisine

• Xianjin Coffee Shop



Siding

• Xulong Tea Factory Tea Ball Making

• Chunxin Tea Factory Meirenhong Black Tea

• Ruifeng Tea Factory Grandpa's Bamboo Crafts

Siding
Elementary

• Ahong's Home Coffee Making

• Mingda Tea Factory Tea-flavored Pumpkin Seeds, Guesthouse

• Happy Self-service Grocery Store Purchase Mountain Vegetables



Longtouping

• Longyanshan Garden Cat Wonderland Succulent Planting Churi Guesthouse



Spring^o
2-Day Trip: Cherry blossoms
 (Chukou — Gongtian — Siding)
Day 1

- 10:30** Watch aboriginal performances during a guided tour of the Zhulu village
- 11:30** Taste local cuisine in the Zhulu village or at the House of Sturgeon
- 13:30** Decorate succulent planters at Longshanyan Garden
- 15:00** Walk along a path of cherry blossoms trees at Mituo Zen Temple
- 16:00** Watch the sunset at the trail of mount Er Yanpin
- 17:30** Check in at Churi Guesthouse, Shengli Farm, Jinglong Guesthouse, or Chami House (Other options: Hot Mama's House, Chuxu Guesthouse, Seasonstar B&B)
- 18:00** Enjoy hotpot and make Chinese tea balls at Xulong Tea Factory
- Day 2**
- 09:00** Have breakfast and make Chinese tea balls at Xulong Tea Factory
- 12:00** Enjoy a seasonal meal at Shengli Farm
- 13:30** Afternoon tea at Xianjing Tea Factory, Ahong's Home, Arong's Store or Yinshanyu Tea House

Summer^o
2-Day Trip: Fireflies
 (Gongxing — Siding)
Day 1

- 10:00** Appreciate tea in a guided tour at Songshan Tea Factory
- 12:00** Taste local cuisine at Lo's Family Farm
- 14:00** Do DIY activities in a guided tour at Gongxing ecological park
- 17:30** Check in and have dinner at the Yama Guesthouse (Guests can join in a firefly-watching tour hosted by the guesthouse)
- Day 2**
- 06:30** Watch the sunrise at Mazhu Lake Trail
- 09:00** Roast tea at Jinkuang Tea House
- 12:00** Enjoy traditional Taiwanese cuisine
- 13:30** Have afternoon tea at Xianjin Coffee Shop
- 15:30** Watch the sunset at Eryanping Trail

Fall^o
2-Day Trip: Persimmons
 (Chukou — Gongxing)
Day 1

- 09:00** Visit Bantianyan Temple and attend the persimmon festival in Puwei
- 11:00** Experience persimmon dyeing at Good Fortune and Persimmons
- 12:00** Taste local cuisine at Fushan Winery
- 13:30** Try DIY activities, archery, and deer-feeding at Zhulu village
- 15:00** Relax at the Niupuzai grassland in Chukou
- 16:00** Visit local shops for agricultural produce and souvenirs near Longyin temple
- 17:00** Check in and have dinner at Yama Guesthouse (Other options: Jinkuang Tea House, Zhongming Guesthouse, Lai Mama's House, Chuxu Guesthouse, Seasonstar B&B)
- Day 2**
- 06:30** Watch the sunrise at Mazhu Lake Trail
- 09:00** Roast tea at Jinkuang Tea Factory
- 12:00** Taste local cuisine at Lo's Family Farm
- 13:30** Do DIY activities in a guided tour at Gongxing ecological park

Winter^o
2-Day Trip: Tea
 (Gongtian — Siding)
Day 1

- 10:00** Walk along the Chuhuo Trail at Xiantian Temple
- 12:00** Taste local cuisine at House of Sturgeon
- 13:30** Enjoy afternoon tea and attend a tea ceremony class at Chunxin Tea Factory
- 15:00** Watch the sunset at Eryanping Trail
- 17:30** Enjoy traditional Taiwanese cuisine
- 19:00** Check in at Churi Guesthouse, Shengli Farm, Jinglong Guesthouse, or Chami Guesthouse (Other options: Lai Mama's House, Seasonstar B&B, Chuxu Guesthouse)

Day 2

- 05:00** Watch the sunrise at Eryanpin or Chawu Trail
- 09:00** Appreciate tea and visit a tea plantation at Yinshanyu Tea House
- 10:30** Experience tea dyeing at Jinlong Tea Factory
- 12:00** Taste a seasonal meal at Shengli Farm
- 13:30** Afternoon tea at Xianjin Coffee Shop
- 15:30** Buy souvenir and gifts at Laozhenyi Tea Factory

Secret spots that
only the locals
know



Photography: Chen Shan-hung

Popular spots to chase the sun

50K	53.5K
Gongxing Village:	Eryanping Trail
Longmei Trail	55.5K
Mazhu Lake Trail	Xiangshan
52.5K	Observation Deck
Siding Observation Deck.	57K
Yunding Trail	Longding Trail

Popular spots to chase the moon

Siding Observation Deck	Shizhuo
GPS :	GPS :
23.42429, 120.65269	23.47826, 120.70133

Chukou village—Puwei and Chukou

Store Name	Location	Address	Tel.	Services
Good Fortune and Persimmons	Chiayi Road 124-1/1.7k	No. 52-3, Puwei, Panlu Township, Chiayi County	05-2594291	DIY Persimmon Dyeing / Guided Tour
Argiculture Co-op Society	Provincial Highway 18 /34.5k	No.1, Chukou, Panlu Township, Chiayi County	05-2592323	Guided Tour/Visitor Center
XiaoGanZhe Sugarcane Juice	Provincial Highway 18 /34.5k	No.1, Chukou, Panlu Township, Chiayi County	0912-148004	Sugarcane Juice

Gongxing village— Longmei

Longmei Handmade Buns	Provincial Highway 18 /50.5k	No. 58 Longmei, Gongxing Village, Panlu Township, Chiayi County	0983-330333	Visitor Center
Songshan Tea Factory	Chiayi Township Road 131/0.2k	No. 46-3, Longmei, Gongxing Village, Panlu Township, Chiayi County	05-2586460	Guided Tour/ Visitor Center
Jinguang Tea House	Chiayi Township Road 129/1k	No. 9-1, Longmei, Gongxing Village, Panlu Township, Chiayi County	05-2586798	Tea Roasting/Guided Tour /Accommodations /Farm Produce
Lo's Family Farm	Chiayi Township Road 129/1.3k	No. 7-9, Longmei, Gongxing Village, Panlu Township, Chiayi County	05-2586545	Farm Produce
Yama Guesthouse	Chiayi Township Road 129/1.5k	No. 4-9, Longmei, Gongxing Village, Panlu Township, Chiayi County	05-2586905	Accommodations/ Guided Tour

Gongtain village— Gontian, Siding, Longtou

Gongtian 32 Center	Chiayi Township Road 130/2.8k	No. 32, Daluzai, Gongtian Village, Panlu Township, Chiayi County	05-2586005	Visitor Center / Groceries Visitor
The House of Sturgeon	Chiayi Township Road 130/2.5k, further down south 0.9k	No. 3, Daluzai, Gongtian Village, Panlu Township, Chiayi County	05-2586267	Restaurant
Xingkong Elementary (Xiantian Temple)	Chiayi Township Road 130/3k, further down south 0.3k	No.22, 7th Neighborhood, Guolongzai, Gongtian Village, Panlu Township, Chiayi County	0928-329825	Temple/DIY Activities
Free Spirit Coffee Farm	Chiayi Township Road 130/2.8k,	No. 4, Lantianzai, Guolongzai, Gongtian Village, Panlu Township, Chiayi County	05-2586523	Coffee/DIY Activities
Traditional Cuisine	Provincial Highway 18/52.5k	No. 80-14, Siding, Gongtian Village, Panlu Township, Chiayi County	05-2586605	Local Cuisine Restaurant
Laozhengyi Tea Factory	Provincial Highway 18/52.5k	No. 80-14, Siding, Gongtian Village, Panlu Township, Chiayi County	05-2586211	Groceries/Tea House /Fruits and Vegetables

Xianjing Coffee Shop	Provincial Highway 18 52.9k	No. 80, Siding, Gongtian Village, Panlu Township, Chiayi County	05-2586526	Coffee/Tea/Light Meals/Succulent Plants
Jiahe Tea Factory	Provincial Highway 18 52.9k	No. 75-5, Siding, Gongtian Village, Panlu Township, Chiayi County	05-2586580	Coffee/Tea/Handmade Brown Sugar/ Guided Tour
Xulong Tea Factory	Provincial Highway 18 54.5k	No. 63-1, Siding, Gongtian Village, Panlu Township, Chiayi County	05-2586366	Tea/Guided Tour/ DIY Activites
Ruifeng Tea Factory	Provincial Highway 18 54.5k	No. 63-5, Siding, Gongtian Village, Panlu Township, Chiayi County	05-2586229	Tea/Bamboo Crafts
Chunxin Tea Factory	Provincial Highway 18 54.6k	No. 62-1 Siding, Gongtian Village, Panlu Township, Chiayi County	05-2586789	Tea/DIY Activities
Happy Self-service Grocery Store	Provincial Highway 18 55k	No. 59-3 Siding, Gongtian Village, Panlu Township, Chiayi County	0912-180629	Fruits and Vegetables
Ahong's Home	Provincial Highway 18 55k	No.42 Siding, Gongtian Village, Panlu Township, Chiayi County	05-258 6481	Coffee/Guided Tour
Mingda Tea Factory	Provincial Highway 18 55k	No.42-2 Siding, Gongtian Village, Panlu Township, Chiayi County	05-2586117	Tea/Guided Tour/Accommodations
Jinglong Tea Factory	Provincial Highway 18 55.5k	No. 8-2, Siding, Gongtian Village, Panlu Township, Chiayi County	05-2586983	Tea/Guided Tour/ Accommodations/ DIY Activities
Shengli Tea Factory	Provincial Highway 18 56k	No. 9-2, Siding, Gongtian Village, Panlu Township, Chiayi County	05-2586785	Tea/Guided Tour/ Accommodations/ DIY Activities
Longyanshan Garden	Provincial Highway 18 57.6k	No.17-19, Longtou, Gongtian Village, Panlu Township, Chiayi County	05-2586939	Guided Tour/ Accommodations/ DIY Activities/Farm Produce

Other recommended stores

Full of Beans Coffee Shop	Provincial Highway 18 / the Zhulu village	No.16, Ln. 2, Meihua 6th Rd., Chukou village, Panlu Township, Chiayi County	0927-282381	Coffee/ DIY Coffee Roasting/ Aiyu Jelly Workshop
Arong's Store	Provincial Highway 18 / 54k	No.66-4, Siding, Gongtian Village, Panlu Township, Chiayi County	05-258 6663	Coffee/Handmade Pipes
Simple Happiness Hotpot	Provincial Highway 18/ 55k	No. 54-3, Siding, Gongtian Village, Panlu Township, Chiayi County	0987-376427	Hotpot
Yinsanyu	Provincial Highway 18 / 55 .6k	No. 7-18, Siding, Gongtian Village, Panlu Township, Chiayi County	05-2586518	Tea/DIY Activites

By car

Option 1:

National Highway 1→Chiayi System Interchange (272K)→Expressway 82→National Highway 3→Chungpu Interchange(297K)→Provincial Highway 18→Alishan Scenic Area

Option 2:

National Highway3→Provincial Highway 3→Meishan interchange (279K)→County Highway 162A (Meishan, Juili, Juifeng and Taihe)→Alishan Scenic Area

Option 3:

National Highway 3→Provincial Highway 3→Zhuqi interchange (290K)→County Highway 166(Tsuchi, Taihsing, Juili)→Alishan Scenic Area

* If the roads mentioned above are blocked due to rockslide, you may consider the following alternative roads. If the alternative roads are also blocked, please return to where you were and wait until the roads are repaired.

Main Roads Inside the Scenic Area

1 Provincial Highway 18(Alishan Highway)

This is the main highway that connects Chiayi City to

Alishan Scenic Area. It also leads to Chukou, Gongxing, and Gongtian villages.

2 Chiayi Township Road 124-1

This is the main road that connects Chukou, Puwei, and Zhulu. It also connects to Chiayi Township Road 159-A, which leads to Chiayi City.

3 Chiayi Township Road 129

This is the main road that connects Longmei to Danayiku Ecology Park.

4 Chiayi Township Road 130

An alternative road that cuts through Gongtian village and connects to Longtou.

5 Chiayi Township Road 131

This is the main road that connects Longmei to Caoshan. It also connects to Provincial Highway 3.

6 Chiayi Township Road 132

This road connects Gongxing village to Chukou village.

7 Chiayi Township Road 159-A

This road connects Chiayi City to Fanlu township. It connects to Chiayi Township Road 124-1.

By Bus

Chiayi County Bus provides bus services between Chiayi and Fencihu. Along the way, the buss will pass through Chukou, Gongtian Intersection, Longmei, and Siding

Station. Taiwan Tourist Bus offers shuttle services between THSR Chiayi Station and Alishan, and between TRA Chiayi Station and Alishan. The bus will make stops at Chukou, Longmei, and Siding station. Kuo-Kuang Bus

Bus	Route	Departure Times
Taiwan Tourist Bus	Alishan Route A	0930 1010 1100 1310
	(THSR Chiayi Station – Alishan) Alishan Route B	First Bus: 0610 Last Bus: 1410
Chiayi County Bus	(TRA Chiayi Station - Alishan) 7302 Chiayi - Fengcihu	First Departing Bus: 0655 Last Returning Bus: 1700
	7314 Chiayi - Dabang	First Departing Bus: 0545(Mon-Fri), 1055(Sat & Sun) Last Returning Bus: 1910
	7322 Chiayi – Alishan	First Departing Bus: 0555 Last Returning Bus: 1710
	7329 THSR Taibo Station - Alishan	First Departing Bus: 0930 Last Returning Bus: 1640
Kuo-Kuang Bus	1835 Taipei - Alishan	Taipei Departure: 2045(Mar - Oct), 2145(Nov – Feb) Only on Fri & Sat Alishan Departure: 1130 Only on Sat & Sun

Travel Journal



This image shows a full page of white paper with horizontal blue lines. At the bottom of the page, there is a stylized illustration of green mountains or hills. The lines are evenly spaced and cover most of the page area.



Travel Stamp



Travel Stamp



Travel Stamp



Travel Information:

Alishan National Scenic Area Administration, Tourism Bureau, Ministry of Transportation and Communication
Phone 05-2593900

Culture & Tourism Bureau of Chiayi County
Phone 05-3621855

Fanlu Township Office, Chiayi County
Phone 05-2591951

Shi-Zhou Station, Alishan National Scenic Area Administration
Phone 05-2562067

Other Information:

Tourism Bureau, Ministry of Transportation and Communication
<https://www.taiwan.net.tw/>

Alishan National Scenic Area Administration, Tourism Bureau, Ministry of Transportation and Communication
<https://www.ali-nsa.net/>

Alishan National Scenic Area Administration Facebook
<https://zh-tw.facebook.com/Alishan.nsa/>

Commissioned by: Alishan National Scenic Area Administration, Tourism Bureau, Ministry of Transportation
Implemented by: Dnf Environmental Consultants
Co-organized by: where is Taiwan
Illustration: Huang Yingyin
Graphic Design: Po Hung Design Lab
Translator (Names are in alphabetical order):

Anna Hsiao, Cassidy Lo, Huang Tzu-ting, Lee Chiao-meng, Susan Wang, Zona Chen

