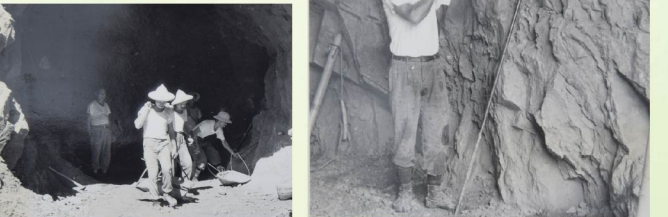
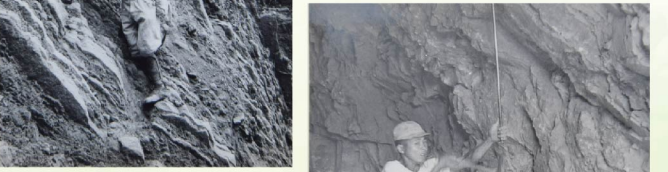


Stories of the Old Days

Road 159 jia is also known as the Dahua Highway. It connects Dahu in Fanlu Township to Guanghua in Zhuqi Township. In 1967, it was built by the residents living along it. Before the Alishan Highway (Highway 18), it was the deepest road into the Alishan area. As the workers who constructed it were paid in bags of flour, it became known as the “flour highway”. This road connects to Road 169 to reach Fenqihu, Shizhuo, Shizilu and Highway 18. Along 159 jia are preserved local history, culture and stories.



Bantian Rock



Bantian Rock is in Fanlu Township. In early times, it was an important trading post for indigenous and Han Chinese peoples. It was also an important gateway to the Alishan area before the completion of Highway 18. The Ziyun Temple was built during the Qing dynasty to worship Guanyin (goddess of mercy). Bantian Rock is along the midslope of a mountain. It has grown in popularity over its history. Fall and winter are persimmon season. Fanlu Township is the largest producer of several varieties of persimmons in Taiwan, all of which are welcomed by consumers.



Qifu (Prayer for Blessings) Trail

Located behind the Ziyun Temple, this trail passes Shitoushan Park and Xiuhui Trail. Along the way is beautiful and luxuriant forest. It is suited to nature walks and bird watching

Xiuhui Trail

Along this trail is mostly broad-leaved forest. It passes the Shenglong Guanyin Plaza and Shitougong Park pavilion. In good weather, it is possible to see the urban areas below.

Guanghua

During the Qing dynasty, immigrants from Fujian Province settled here and farmed. As it is in a basin that rises above the surrounding areas, it was called Dingbenzai. “Ben” refers to basin. At that time, officials in charge of land issues didn’t understand the Hokkien dialect and used the character for “foolish”, which is also pronounced “ben”. In recent years, residents have developed in-depth tours to this area to enable visitors from Taiwan and abroad to experience Guanghua’s “five-star ecology”, as well as its history and culture.

White-faced Flying Squirrel Ecological Trail

This trail is steep and there is often overgrowth, as this area is rarely disturbed. It is home to the nocturnal white-faced flying squirrel.

Firefly Watching Trail

Along the way are tea plantations and the remains of papermaking facilities. Year round it is possible to see fireflies at night.



Shizhuo

According to legend, long ago there was a rock imprinted with the footprint of a celestial being. Just before a natural disaster, it would emit a sound. As it was upright and square like a table, the residents named this area Shizhuo (which means stone table) to express their gratitude to this rock. Due to the high elevation, this is a major tea producing area. From cultivation, harvesting, processing and tasting, to inclusion in the local cuisine, there are many ways to enjoy tea in Shizhuo.

Love Trail

This trail measures about 800 meters in length. It follows Road 169 jia between Shizhuo and Fenqihu. This is a great place to watch the sunset.



Sunset Trail

After passing an area of bamboo forest. It is also possible to see to the Jianan Plain. This is a good trail to walk at sunset.



Cloud Trail

Along this 720-meter trail is an observation platform, from which to quietly observe magnificent forest.



Fenqihu

Fenqihu's former name was Benjiu, which refers to a dustpan, so named due to the shape of its terrain. It is at the junction of the plains and forest railways. It possesses the largest maintenance station along the Alishan Forest Railway. During the Japanese occupation era (1895-1945), a community gradually developed here. In addition to trying an authentic railway lunchbox and learning about the history of the forest railway, hike one of the historic trails to enjoy a trip back in time.



Fenrui Historic Trail

This trail was built during the Qing dynasty to carry out trade. It connects Fenqihu and Ruili. Along this 6.4-kilometer trail have been preserved the Yinyang Temple and Zen shrine.

Muma Wooden Plank Trail

This trail extends 700 meters. You may even see an Alishan Forest Railway train passing by.

Cedar Wooden Plank Trail

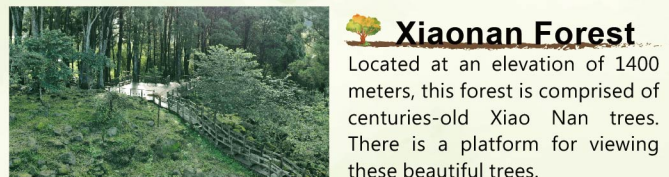
From the Fenqihu Century-Old Old Street, a path connects to a forest trail. This trail extends 700 meters. This is one of the few places to view fireflies in fall and winter

Dadongshan Trail

At the end of this trail is an observation pavilion at 2,000 meters in elevation. From here are views of Alishan, Yushan (Jade Mountain), Zengwen Reservoir, and Caoling.

Northern Side of Fenqihu Trail

This trail extends for about 2,000 meters. Along the way are maple trees and views of Fenqihu. In the distance can be seen Dadongshan.



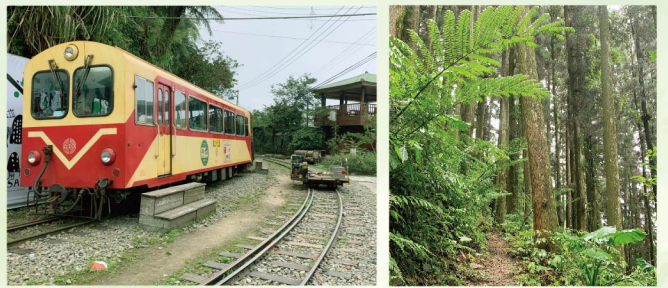
Xiaonan Forest

Located at an elevation of 1400 meters, this forest is comprised of centuries-old Xiao Nan trees. There is a platform for viewing these beautiful trees.

Shizilu



This community developed along the Alishan Forest Railway line. A climb to the observation platform next to the train station is recommended to view this quaint community. Or, follow the railway tracks to search for treasures among the vendors, such as barbecued pork, chayote, cast iron plant, wild jelly figs, handmade moichi and freshly brewed coffee. You may also find Japanese ginger, an ingredient common to Japanese cuisine, which can be deep fried to make tempura. There are many stories to discover here. Welcome to Shizilu where you can experience the tranquility and hospitality of a small train station hidden in the forest.



Laiji Trail

The Shizilu-Laiji Historic Trail begins next to the Shizilu Train Station. From here, it is a 5.4-kilometer descent to the Laiji Community. Before the Alishan Highway, this was an important transportation hub.

Mumadao Historic Trail

This trail passes through Japanese cedar and bamboo forests. It was originally constructed for transporting luggage, but its rich ecology remains preserved. This trail reaches the Shizi Elementary School and connects to a road leading to Deenyana.

A travel expert recommends

Shizilu X Fenqihu II Alishan Forest Railway stations • wandering II



Take the Alishan Forest Railway to the Shizilu Train Station

Chao Peng Bai chicken drumstick stewed in sesame oil noodle soup

Jelly fig gelatin making experience+ jelly fig facial mask

Sightseeing tour of historic trails

Wagashi DIY+ Tasting high mountain tea

Take the Taiwan Tourist Shuttle to Fenqihu

Visit a century-old bamboo shoot processing facility

Taste a Fenqihu railway lunchbox

Woven bamboo fan from Fenqihu Century-Old Street DIY



Alishan international tea art school experience



Learn about tea plantation ecology/ undergo training to pick tea

Processing of tea

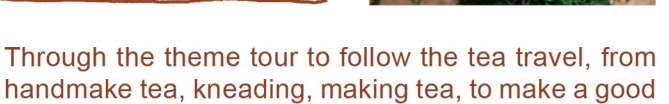
View the nighttime glow or star-filled skies

Secrets of tea art masters revealed

Tea ceremony arrangement & Tea tasting experience

Walk the Dingshizhuo system trails

Stay at a Dingshizhuo guesthouse



Through the theme tour to follow the tea travel, from handmake tea, kneading, making tea, to make a good tea, with everyone to understand the life tea aesthetics of Alishan.

Seasonal Products

Tamarillos

This fruit grows year-round. When ripe, the skin changes from green to red. It is necessary to cut this fruit open to eat. Rich in pectin, it tastes like kiwi fruit.



Japanese ginger

Japanese ginger is harvested between July and mid-September. It has a slightly spicy taste and subtle floral fragrance. It can be served cold, stir-fried or deep-fried.



Chayote shoots + chayote

In Alishan, due to the cool climate, chayote shoots are tender and subtly sweet.



Persimmons

Fall is persimmon season. There are various varieties grown. They can be eaten fresh or dried. Persimmon ice cream and other persimmon-based foods are also available.



Three Must-Buy Souvenirs!!!

High mountain tea

Alishan's climate is cool to cold. In the morning and evening, the mountains are shrouded in cloud and mist. There is only a short duration of sunlight on average. These are the conditions for producing superior tea with a jade green luster and subtly sweet taste.



Wild jelly figs

Wild jelly figs are found at medium to high elevations, wound around rocks or trees. When their seeds are soaked in water and rubbed, they produce a gelatin, which is used to create a refreshing dessert.



Bamboo shoots

Bamboo shoots are plump and tender. In addition to enjoying dishes made with fresh bamboo shoots, you can buy bamboo shoots that have been boiled and sealed in vacuum packs.



Telephone number for travel information

• Chukou visitor and administration center	05-2593900
• Chiayi County Dingbenzai Cultural Association	05-2561929
• Shizhuo 7-11 Information Station	05-2562736
• Fenqihu Dengshan Dining Hall Information Station	05-2562666
• Shizi Community Development Association	05-2511066

Website for travel information

Taiwan Tourism Bureau, Ministry of Transportation and Communications
<https://www.taiwan.net.tw/>

Alishan National Scenic Area Administration
<https://www.ali-nsa.net/zh-tw>

Alishan New Impressions
• Facebook Fans Page
<https://www.facebook.com/Alishan.nsa/>

Alishan EASY GO
<https://alishan.welcometw.com/>

More Sightseeing, Dining and Accommodation Recommendations!

交通部觀光局阿里山國家風景區管理處

Alishan National Scenic Area Administration, Tourism Bureau, MOTC.

60246 51, Checheng, Chukou Village, Fanlu Township, Chiayi County

Ad